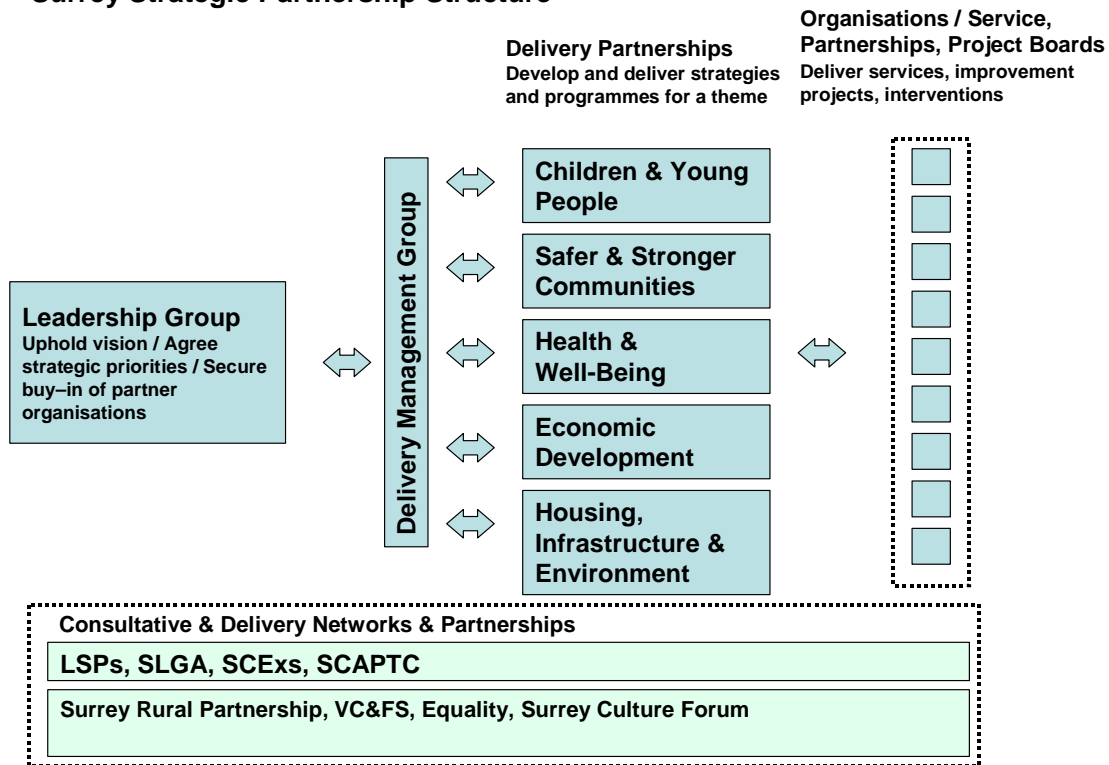


The Surrey Strategic Partnership (SSP)

The work of the SSP is guided by the [Leadership Group](#) and delivered through a small Management Group and the [five thematic partnerships](#).

Surrey Strategic Partnership Structure



Surrey’s Sustainable Community Strategy 2008 (SCS)

The Sustainable Community Strategy (SCS) aims to improve the quality of life in Surrey. The SCS is the Surrey Strategic Partnership’s agreement about how we align activities and priorities to achieve more with fewer resources. It is based upon what local people have told us and what we understand their needs to be.

By acting together Surrey’s public bodies, business and voluntary sector can tackle the big issues facing the county for example:

- Sustaining the county’s successful economy, through and beyond the recession.
- Improving opportunities in life for all young people.
- Promoting self-help and healthy lifestyles by, for example, tackling excessive alcohol consumption.

- Helping people with support needs such as people with disabilities, older people, young people leaving care or ex-offenders to live independently.
- Addressing the differences in health, attainment, career prospects and living environment experienced by some people in the county in comparison with the majority.
- Making sure new development meets the needs of Surrey's residents and businesses. Ensuring it is of high quality, with the right infrastructure and in the right place and that the environment is protected.
- Addressing climate change, for example by helping people to lead more sustainable lifestyles.
- Promoting safer and stronger communities through, for example, neighbourhood action to reduce anti-social behaviour.

A draft SCS was the subject of a 3 month consultation during the winter. Revisions are now being considered and a final SCS is due to be published in the autumn.

Surrey's Local Area Agreement (LAA) 2008 – 2011

The [Local Area Agreement \(LAA\) 2008-11](#) is a three-year 'deal' between Central Government and the Surrey Strategic Partnership to support delivery of the SCS. It is a set of targets for a package of indicators chosen from the national set of 188 indicators to reflect Surrey's priorities. The current LAA has 27 targets. The LAA is available on the partnership website (link at bottom of page) together with quarterly performance reports and explanatory notes.

Local Area Agreements recognise the democratic role of Local Authorities to lead Local Strategic Partnerships (LSPs). In two tier areas the responsibility to prepare the LAA with partners rests with the County Council and targets are agreed for the county. Where appropriate some district and borough LSPs or their partners have set local targets against relevant LAA indicators to help drive local delivery.

[Delivery plans](#) have been agreed for all of Surrey's Local Area Agreement targets. Each LAA target has a lead organisation (and person) and a set of supporting partners that signed up to the target. There is a legal duty on named partners to cooperate with the SSP in negotiating and fulfilling the LAA. Support for delivery of relevant LAA targets should be reflected in partners' business plans and budgets.

Surrey's Local Area Agreement is at the core of what is assessed by the Audit Commission for the [Comprehensive Area Assessment](#). [Quarterly performance reports](#) are published on the website.

Current Developments

July 2009

- Self Assessment / Peer Review / Area Assessment Feedback
 - Good examples of partnership working but strategic partnership over concerned with process
 - The need to build joint understanding of local need, shared ambition and ownership of priorities (beyond LAA)
 - The need to build capacity and trust
 - The need to deliver and monitor progress

<http://www.surreycc.gov.uk/communityplanning>

- Better communications both within the partnership and with citizens

September 2009

- Partnership Development Plan
- Governance
- Sustainable Community Strategy
- Priority Places DMG visits
 - 2/9/09 Merstham,
 - to be confirmed Maybury and Sheerwater, Stanwell, Westborough

December 2009

- 10/12 Area Assessment to be published

Further information

The SSP Business Support Unit, based in County Hall, is a partnership resource and supports the SSP.

For more information:

email: strategic.partnership@surreycc.gov.uk

or visit the Surrey Strategic Partnership Community Planning website

Sustainable Community Strategy Priorities and Measures

The SSP has agreed ten priorities A-J as a focus for the work together to achieve these aims. Measures marked with an asterisk (*) have targets set in the Local Area Agreement (LAA) 2008-11 with Government for delivering the Sustainable Community Strategy. Ten measures (#) have been agreed to provide a high level view of progress across a broad improvement agenda the ten priorities over the longer term.

- A. Improve learning, health and employment outcomes for children and young people, particularly the vulnerable and disadvantaged
- Achievement of Level 2 qualifications by age 19 (NI 79) ^{#*}
 - Obesity in primary school children (NI 56)*
 - Under 18 conceptions (NI 112)*
 - First time entrants to the criminal justice system (NI 111)*
 - 16-18 year olds not in education, training or employment (NEET) (NI 117)*
 - + 10 statutory indicators across education outcomes / narrowing the gap / children in care*
- B. Improve the safeguarding of Surrey's most vulnerable children and young people
- Children becoming the subject of a child protection plan for a second or subsequent time (NI 65) ^{#*}
- C. Promote healthy lifestyles, particularly targeting the most vulnerable
- The gap in life expectancy between the bottom fifth most deprived wards and the top fifth least deprived wards[#]
 - Alcohol related hospital admissions (NI 39)*
 - Prevalence of smoking among adults (NI 123)*
- D. Support more people to live independently and to exercise greater choice and control over their health and support arrangements
- The proportion of all those receiving adult social care services who are supported to live independently[#]
 - Social care clients receiving self directed support (NI 130)*
 - Older people achieving or regaining independence through rehabilitation or intermediate care (NI 125)*
 - Support for carers (NI 135)*
 - Adults with a learning disability in settled accommodation (NI 145)*
- E. Improve the global competitiveness of Surrey's economy through sustainable growth, underpinned by appropriate infrastructure
- Gross value added (GVA) per capita[#]
 - Rate of business start ups and survival rates at 12 / 24 months
 - Number of businesses supported
 - Gross Value Added (GVA) growth of businesses intensively assisted
- F. Make Surrey's economy more inclusive
- Number of people claiming key out of work benefits (NI 152) [#]
 - Working age people with level 2 skills (NI 163)*
 - Working age people with level 3 skills (NI 164)*
- G. Help people in Surrey to achieve more sustainable lifestyles
- Carbon dioxide (CO2) emissions per capita (NI 186) ^{#*}
 - Household waste recycled and composted (NI 192)*

- H. Create better, more sustainable developments that deliver more social, environmental, and economic benefit
- Overall / general satisfaction with the local area (NI 5) ^{#*}
 - Provision of new homes (NI 154)*
 - More affordable homes (NI 155)*
 - Condition of non-principal roads (NI 169)*
- I. Improve public confidence in the ability of public services to keep Surrey safe, prepare for emergencies, and reduce crime and anti-social behaviour
- Public confidence in police and local authorities dealing with local concerns about antisocial behaviour & crime (NI 21) ^{#*}
 - Re-offending rate of prolific & priority offenders (NI 30)*
 - Repeat incidents of domestic violence (NI 32)*
 - Protection against terrorist attack (NI 36)*
- J. Strengthen local communities through targeted public and voluntary sector activity, active citizenship and work to tackle inequalities
- Perceived influence over local decisions (NI 4)*
 - Overall / general satisfaction with the local area (NI 5) ^{#*}
 - Support for the third sector (NI 7)*
 - Number of vulnerable people achieving independent living (NI 141)*

